



## GET THE ABSOLUTE BEST FROM YOUR RICOH® DTG PRINTER

Digital Factory Apparel Ricoh Edition is much more than RIP software. It is a complete color management, job preparation and production software solution.



# LEADING EDGE COLOR MANAGEMENT AND PRODUCTION WORKFLOW TECHNOLOGY



DOWNLOAD A FREE FULLY FUNCTIONAL TRIAL VERSION AT [CADLINK.COM](http://CADLINK.COM)

## YOU'VE MADE THE INVESTMENT IN YOUR PRINTER, NOW MAXIMIZE IT BY USING INDUSTRY-LEADING SOFTWARE

Windows-based printer drivers just can't hit the same colors. No other RIP-based software packages include the built in preproduction and seamless workflow tools that are all included within Digital Factory. The choice is obvious.

### SEAMLESS INTERFACE WITH DESIGN APPLICATIONS

No need to worry about the issues involved with exporting and importing files. Digital Factory Apparel uses "send to" technology direct from your favorite design applications.

Print directly from your favorite design application



Or, if you prefer, drag and drop files directly into selected queues



VISUAL PRODUCTION MANAGER



## COMPLETE, CENTRALIZED JOB MANAGEMENT

Digital Factory Apparel Features Visual Production Manager™, a simple, easy to use interface that manages multiple queues and multiple printers simultaneously.

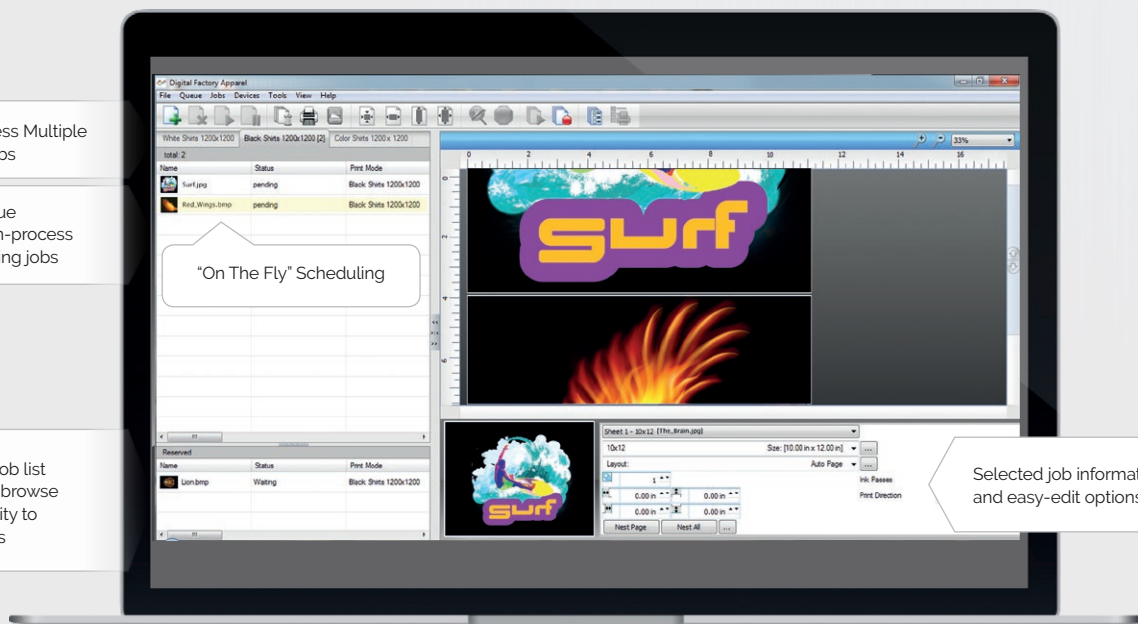
Easy Access Multiple Queue Tabs

Each queue displays in-process and pending jobs

Archived job list or built-in browse functionality to locate files

"On The Fly" Scheduling

Selected job information and easy-edit options





## THE MOST VIBRANT PRINTS - EVERY TIME



### UNMATCHED HIGH-FIDELITY COLOR

Extended color gamut and professionally created color profiles provide the most vibrant, color accurate prints available today. Select from pre-set options for photographic or illustrated graphics and get the best output first time, every time. Digital Factory also works natively with both RGB and CMYK graphics files thereby reducing color shifts when converting from one color space to another.

### AUTOMATED UNDERBASE AND EXCEPTIONAL WHITE INK MANAGEMENT

Proper use of white ink is essential to printing images onto black or dark colored fabrics. Digital Factory Apparel Ricoh® Edition's advanced use of layer technology automatically creates an underbase layer that can be sent to a production queue directly from a design application.

### UNMATCHED INTEGRATION OF FABRIC COLOR INTO DESIGN

Digital Factory Apparel Ricoh® Edition includes "KnockMeOut" plug-ins for Adobe PhotoShop™ that easily remove unwanted color backgrounds so that designs literally "blend" into the fabric.

Preset cues automatically detect and remove black within a design allowing the black fabric to show through, saving ink and enhancing the finished product.



# DIGITAL FACTORY RICOH® EDITION FEATURES

## AUTOMATED JOB PREPARATION TOOLS

- Built-in special effects/filters (distressed, distressed frames, sharpen)
- Updated Supersize filter functionality for improved image resolution
- Job color replacement
- Apply chokes/spreads to any color plane
- Export template layouts with improved template user interface
- Quick image duplication interface
- Visual print preview
- Multi-copy with spacing controls (In-Queue feature)
- Cropping controls of image and job (In-Queue feature)
- Rotation controls of image and job (In-Queue feature)
- Mirror, invert image and job (In-Queue feature)
- Scale image and job to any size (In-Queue feature)
- Soft proofing

## SIMPLIFIED JOB MANAGEMENT, PRODUCTION FEATURES

- Easy to use queue set-up wizard. Set up production queues quickly and easily
- Bar code support for automated production
- Enhanced plug-ins for Corel, Illustrator and Photoshop that send print jobs directly to production queues with automated white underbase created. No cumbersome job preparation required.

- Detailed job costing tools
- High volume production options available (RIP Server + Multiple machine support, added cost applied)
- Export queues and printer packages
- Unique, single window visual interface, one central easy to manage hub for all jobs
- Auto-scheduling or manual scheduling of jobs
- On-the-fly job prioritization using simple drag and drop
- Job archiving, history, print status and job log
- Job notes

## FASTER, EVEN MORE ROBUST

- Custom printer drivers and color profiles specifically designed for the Ricoh®- Ri 1000 printer.
- Lightning fast 64-bit architecture
- Optimized multiple job processing (RIP threading)
- Simplified navigation; Easy queue menu tabs, page view and job properties
- Grid option in job preview window
- Instant access to job information using "mouse-over image"
- Automated TCP/IP port search for easier network printing setup
- Quick job reprints with save job backup (.jpk file) option
- Worldwide language support using Unicode
- Windows® 11, 10 (32/64 bit) support
- Optimized RIP processing speeds
- Start to finish .pdf workflow support

- Send jobs directly to queues from design applications
- Rip once, print many
- Rip and print on the fly

## UNIQUE T-SHIRT AND APPAREL SPECIFIC FEATURES

- Preset color profiles for white, black and colored fabrics
- Templates support for exact positioning of graphics on garments
- "KnockMeBlackOut", black and grey color removal
- "KnockMeColorOut", white and other color removal
- White Ink layer support
- Send job with underbase directly from design applications
- Automatic trapping in queues

## MORE HIGH FIDELITY COLOR FEATURES THAN EVER

- Hit the difficult colors that you can never seem to achieve with new custom color profile sets
- Easy color adjustments
- Color adjustment wizard for merging ICC rendering intents
- Easy-access to printmodes and printmode overrides (less queue creation and management required)
- High fidelity, ICC compliant color management engine (ColorLogic)
- Simple ink volume controls
- Complete manual color curve controls by image detail (shadows, mid-tones, highlights)

## FIERY FAMILY OF SOFTWARE PRODUCTS

Discover the benefits of using a single source for all your design and production requirements



[www.cadlink.com](http://www.cadlink.com)

Digital Factory is a registered trademark of Fiery, LLC. All other trademarks are a property of their respective owners.

### SUPPORTED PRINTERS:

Supports Ricoh®- Ri 1000 and Ri2000 garment printers



### COMPATIBLE WITH:

Windows 11

Windows 10

### SYSTEM REQUIREMENTS:

	MINIMUM	RECOMMENDED
CPU	Dual Core (2.0 Ghz or higher)	Triple Core (2.0 Ghz or higher)
HDD	500 GB	750+ GB
RAM	2 GB	4GB