



HIGH FIDELITY COLOUR. OPTIMISED WORKFLOW.

Digital Factory RIP software provides an all-inclusive colour management, production workflow solution across a variety of applications supporting virtually all widely used digital printing as well as cutting devices. A completely integrated print as well as print and cut software package, Digital Factory powers all digital print production projects from start to finish.



DIGITAL FACTORY FEATURES A CENTRAL HUB FOR SIMPLIFIED WORKFLOW MANAGEMENT

VISUAL PRODUCTION MANAGER (VPM)

VPM includes all of the most widely used pre-production, job management tools you need in single easy to use location.

The screenshot displays the Digital Factory VPM software interface. On the left, a 'Jobs' panel lists several print jobs with details like Name, Status, Print Mode, Copies, Job Cost, and File Type. A 'The Grand Tour Poster.jpg' job is highlighted, showing its status as 'Pending', print mode as 'Light Cotton 900x400', and other specifications. Below this, a 'Reserved' panel shows a list of jobs with columns for Name, Status, Print Mode, Copies, Job Cost, and File Type. A 'Job archive' panel is also visible. The main workspace shows a 'Visual print preview' of a poster for 'THE GRAND TOUR' with a ruler overlay. A 'Modify Step and Repeat' dialog box is open, showing options for 'Pattern Style', 'Area W', 'Columns', 'Rows', 'Total copies', 'X spacing', 'Y spacing', and 'Generate Partial Items'. A 'Step and repeat' callout points to this dialog. Other callouts include 'Easy Access Multiple Queue Tabs with simultaneous multiple printer support', 'Easy access pre-production tools', 'Job scheduling with detailed file information', 'Optimised job nesting', 'Interactive large print tiling', and 'Contour cutting of complex shapes'.

Easy Access Multiple Queue Tabs with simultaneous multiple printer support

Easy access pre-production tools

Job scheduling with detailed file information

Job archive

Optimised job nesting

Interactive large print tiling

Contour cutting of complex shapes

Step and repeat

Visual print preview

DIGITAL FACTORY IS AVAILABLE IN THREE PACKAGES.



Digital Factory Print and Cut Production

Multiple printer/cutter support for higher volume shops.



Digital Factory Print and Cut

Single printer/single cutter support for shops using print and cut workflows.



Digital Factory Print

Single printer support for shops wishing to optimise digital print workflows.

*Specialty modules can also be added to packages as required. Visit www.cadlink.com/product/digitalfactory11/ for details.

MAXIMISE PRINTER PERFORMANCE. STREAMLINE AND AUTOMATE PRODUCTION WORKFLOW.

SIMPLIFIED FILE PROCESSING



Import virtually any file types (including .pdf)

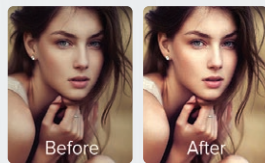


Print direct from design application(s)



Cloud-based as well as network printing

IN-RIP TOOLS FOR PRE-PRODUCTION



Improve file quality

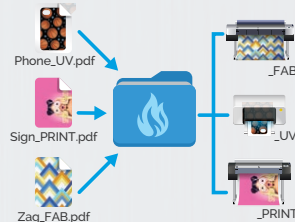


Apply special effects

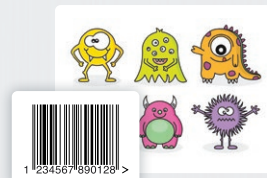


Production mark-up tools

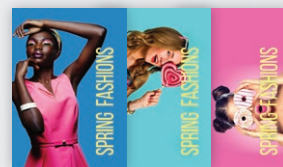
AUTOMATION, JOB MANAGEMENT AND SCHEDULING



Automatic job sorting



Barcode job processing



Custom templates for automated print layout

MULTIPLE APPLICATION SUPPORT



Precise, vibrant colour printing on all media types



Print and cut production with fully integrated contour cutting



Specialty print applications (UV, textile and much more)

BENEFITS OF USING DIGITAL FACTORY



Unmatched colour quality.

State-of-the-art colour management engine ensures precise, vibrant colour printing,



Cost Savings.

Enhanced automation tools provide instantly measurable labor and consumable savings.



Unlimited workflow options.

Support virtually all digital print applications.



Standardise shop software.

Run all printers and cutters with a single software solution

DIGITAL FACTORY FEATURES*

PERFORMANCE AND COMPATIBILITY FEATURES

- Windows® 11, 10 (32/64 bit) support
- Automated network printing
- Automated Cloud-based printing (may require additional module purchase)
- Optimised RIP processing speeds
- Start to finish .pdf workflow support
- Send jobs directly to queues from design applications (PhotoShop™, Corel™, Illustrator™)
- Rip once, print many
- Rip and print on the fly
- Multiple printers, cutters and queues supported simultaneously
- 100+ printer drivers included
- 150+ cutter drivers included
- Lightning fast 64-bit architecture
- Optimised multiple job processing (RIP threading)
- Simplified navigation; Easy queue menu tabs, page view and job properties
- Grid option in job preview window
- Instant access to job information using "mouse-over image"
- Automated TCPIP port search for easier network printing setup
- Quick job reprints with save job backup (.jpb file) option
- Worldwide language support (Unicode International Standard)

COLOUR MANAGEMENT TOOLS

- High fidelity, ICC compliant colour management engine
- 4,000+ custom colour profiles included (most ink/media sets supported)
- Simple ink volume controls
- Complete manual colour curve controls by image detail (shadows, mid-tones, highlights)

- Advanced colour correction tools interface
- Custom halftone settings
- Separation curve adjustments
- Match Pantone colours with Pantone colour matching tables
- Easy colour adjustments
- Colour adjustment wizard for merging ICC rendering intents
- Easy-access to printmodes and printmode overrides (less queue creation and management required)

OPTIMISED JOB MANAGEMENT, SCHEDULING AND AUTOMATION TOOLS

- Unique, single window visual interface, one central easy to manage hub for all jobs
- Easy to use queue set-up wizard.
- Auto-scheduling/manual scheduling of jobs
- On-the-fly job prioritisation using simple drag and drop
- Job archiving, history, print status and job log Job notes
- Detailed Job costing
- Hot folder support
- Extended bar code support for automated production
- Export template layouts with improved template user interface
- Automatic Job Sorter (module purchase required)
- Production Spooler (module purchase required)

BUILT IN PRE-PRODUCTION TOOLS

- Visual print/print and cut preview
- Raw print data preview
- Tiling of large jobs (automatic or manual controls)
- Nesting (automatic or manual controls)

- Multi-copy with spacing controls
- In-RIP crop, rotate, mirror, scale job tools
- Soft proofing
- Step and repeat tool for automated repeatable pattern creation
- Built-in special effects/filters (distressed, distressed frames, sharpen)
- Updated Supersize filter functionality for improved image resolution
- Job colour replacement
- Apply chokes/spreads to any colour plane
- "KnockMeBlackOut", black and grey colour removal
- "KnockMeColourOut", white and other colour removal

UNMATCHED PRINT & CUT FEATURES

- Fully integrated print and cut support without the use of plug-ins or third-party cutting software
- Automated contour cutting using PostScript cut line support
- Full cut sorting supported
- Instant decal maker using HalfCut feature
- Complete interactive print and cut nesting preview
- Send print and cut jobs directly from design applications into queue
- Print and cut jobs on hybrid or separate output devices
- "Roll to roll" print and cut. No need to rewind media for post-print cutting
- Easy registration marks. Machine-specific or generic registration support
- Manual alignment cutter and optical eye cutter support

*not all features reside in all packages (visit website for detailed feature by package list)

FIERY FAMILY OF SOFTWARE PRODUCTS

Discover the benefits of using a single source for all your design and production requirements



www.cadlink.com

Digital Factory is a registered trademark of Fiery, LLC. All other trademarks are a property of their respective owners.

SUPPORTED PRINTERS:

Visit cadlink.com/supportedoutputs/ for a list of all supported printers.

CONNECT WITH US:



COMPATIBLE WITH:

Windows 11

Windows 10

SYSTEM REQUIREMENTS:

	MINIMUM	RECOMMENDED
CPU	Dual Core (2.0 Ghz or higher)	Triple Core (2.0 Ghz or higher)
HDD	500 GB	750+ GB
RAM	2 GB	4GB