



HIGH FIDELITY COLOR. OPTIMIZED WORKFLOW.

Digital Factory RIP software provides an all-inclusive color management, production workflow solution across a variety of applications supporting virtually all widely used digital printing as well as cutting devices. A completely integrated print as well as print and cut software package, Digital Factory powers all digital print production projects from start to finish.



DIGITAL FACTORY FEATURES A CENTRAL HUB FOR SIMPLIFIED WORKFLOW MANAGEMENT

VISUAL PRODUCTION MANAGER (VPM)

VPM includes all of the most widely used pre-production, job management tools you need in single easy to use location.

The screenshot displays the Digital Factory VPM software interface, which is a central hub for managing production workflows. The interface includes a top menu bar with options like File, Queue, Jobs, Devices, Tools, View, and Help. Below the menu is a toolbar with various icons for file operations and production settings. The main workspace is divided into several panels:

- Left Panel:** A sidebar with tabs for 'Jobs', 'Supplies', 'Production Plug-ins', 'Easy Adjustments', and 'Effects'. A 'Jobs' tab is selected, showing a list of jobs with columns for Name, Status, Print Mode, Copies, Job Cost, and File Type. A job titled 'The Grand Tour Poster.jpg' is highlighted.
- Top Panel:** A 'Show Print and Cut Previews' section showing a large, colorful graphic of 'THE GRAND TOUR' poster with various design elements like a rocket, a woman, and a monster.
- Bottom Panel:** A 'Modifying Step and Repeat' dialog box with settings for Pattern Style, Columns, Rows, X spacing, Y spacing, and Total copies. It also has buttons for 'Save...', 'Load...', 'Apply', and 'Cancel'.
- Bottom Right Panel:** A 'Job archive' section showing a list of jobs with columns for Name, Status, Print Mode, Copies, Job Cost, and File Type. A job titled 'Hansa Yoga Decals.pdf' is highlighted.

Callouts and annotations highlight key features:

- Easy Access Multiple Queue Tabs with simultaneous multiple printer support:** Points to the 'Jobs' tab in the sidebar.
- Easy access pre-production tools:** Points to the 'Supplies', 'Production Plug-ins', 'Easy Adjustments', and 'Effects' tabs.
- Job scheduling with detailed file information:** Points to the job details for 'The Grand Tour Poster.jpg'.
- Job archive:** Points to the 'Job archive' section at the bottom right.
- Optimized job nesting:** Points to the 'Nest Page' and 'Nest All' buttons.
- Interactive large print tiling:** Points to the 'Show Print and Cut Previews' section.
- Contour cutting of complex shapes:** Points to the 'Modifying Step and Repeat' dialog box.
- Step and repeat:** Points to the 'Modifying Step and Repeat' dialog box.
- Visual print preview:** Points to the large graphic of 'THE GRAND TOUR' poster.

DIGITAL FACTORY IS AVAILABLE IN THREE PACKAGES.



Digital Factory Print and Cut Production

Multiple printer/cutter support for higher volume shops.



Digital Factory Print and Cut

Single printer/single cutter support for shops using print and cut workflows.



Digital Factory Print

Single printer support for shops wishing to optimize digital print workflows.

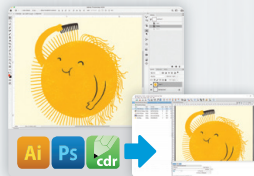
*Specialty modules can also be added to packages as required. Visit www.cadlink.com/product/digitalfactory10/ for details.

MAXIMIZE PRINTER PERFORMANCE. STREAMLINE AND AUTOMATE PRODUCTION WORKFLOW.

SIMPLIFIED FILE PROCESSING



Import virtually any file types (including .pdf)

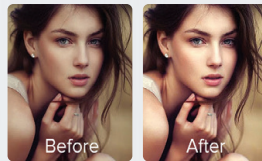


Print direct from design application(s)



Cloud-based as well as network printing

IN-RIP TOOLS FOR PRE-PRODUCTION



Improve file quality

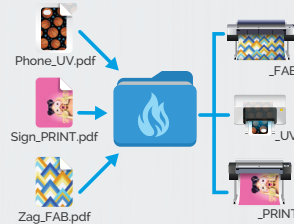


Apply special effects

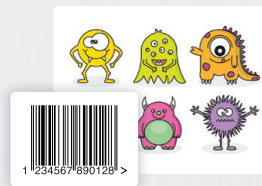


Production mark-up tools

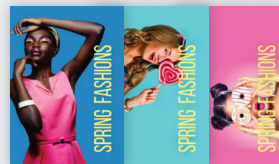
AUTOMATION, JOB MANAGEMENT AND SCHEDULING



Automatic job sorting



Barcode job processing



Custom templates for automated print layout

MULTIPLE APPLICATION SUPPORT



Precise, vibrant color printing on all media types



Print and cut production with fully integrated contour cutting



Specialty print applications (UV, textile and much more)

BENEFITS OF USING DIGITAL FACTORY



Unmatched color quality.

State-of-the-art color management engine ensures precise, vibrant color printing.



Cost Savings.

Enhanced automation tools provide instantly measurable labor and consumable savings.



Unlimited workflow options.

Support virtually all digital print applications.



Standardize shop software.

Run all printers and cutters with a single software solution

DIGITAL FACTORY FEATURES*

PERFORMANCE AND COMPATIBILITY FEATURES

- Windows® 10, 8, 7 (32/64 bit) support
- Automated network printing
- Automated Cloud-based printing (may require additional module purchase)
- Optimized RIP processing speeds
- Start to finish .pdf workflow support
- Send jobs directly to queues from design applications (PhotoShop™, Corel™, Illustrator™)
- Rip once, print many
- Rip and print on the fly
- Multiple printers, cutters and queues supported simultaneously
- 100+ printer drivers included
- 150+ cutter drivers included
- NEW | Lightning fast 64-bit architecture
- NEW | Optimized multiple job processing (RIP threading)
- NEW | Simplified navigation; Easy queue menu tabs, page view and job properties
- NEW | Grid option in job preview window
- NEW | Instant access to job information using "mouse-over image"
- NEW | Automated TCP/IP port search for easier network printing setup
- NEW | Quick job reprints with save job backup (.jpb file) option
- NEW | Worldwide language support (Unicode International Standard)

COLOR MANAGEMENT TOOLS

- High fidelity, ICC compliant color management engine
- 4,000+ custom color profiles included (most ink/media sets supported)
- Simple ink volume controls
- Complete manual color curve controls by image detail (shadows, mid-tones, highlights)

- Advanced color correction tools interface
- Custom halftone settings
- Separation curve adjustments
- Match Pantone colors with Pantone color matching tables
- NEW | Easy color adjustments
- NEW | Color adjustment wizard for merging ICC rendering intents
- NEW | Easy-access to printmodes and printmode overrides (less queue creation and management required)

OPTIMIZED JOB MANAGEMENT, SCHEDULING AND AUTOMATION TOOLS

- Unique, single window visual interface, one central easy to manage hub for all jobs
- Easy to use queue set-up wizard.
- Auto-scheduling/manual scheduling of jobs
- On-the-fly job prioritization using simple drag and drop
- Job archiving, history, print status and job log Job notes
- Detailed Job costing
- Hot folder support
- NEW | Extended bar code support for automated production
- NEW | Export template layouts with improved template user interface
- NEW | Automatic Job Sorter (module purchase required)
- NEW | Production Spooler (module purchase required)

BUILT IN PRE-PRODUCTION TOOLS

- Visual print/print and cut preview
- Raw print data preview
- Tiling of large jobs (automatic or manual controls)
- Nesting (automatic or manual controls)

- Multi-copy with spacing controls
- In-RIP crop, rotate, mirror, scale job tools
- Soft proofing
- NEW | Step and repeat tool for automated repeatable pattern creation
- NEW | Built-in special effects/filters (distressed, distressed frames, sharpen)
- NEW | Updated Supersize filter functionality for improved image resolution
- NEW | Job color replacement
- NEW | Apply chokes/spreads to any color plane
- NEW "KnockMeBlackOut", black and grey color removal
- NEW "KnockMeColorOut", white and other color removal

UNMATCHED PRINT & CUT FEATURES

- NEW | Fully integrated print and cut support without the use of plug-ins or third-party cutting software
- Automated contour cutting using PostScript cut line support
- Full cut sorting supported
- Instant decal maker using HalfCut feature
- Complete interactive print and cut nesting preview
- Send print and cut jobs directly from design applications into queue
- Print and cut jobs on hybrid or separate output devices
- "Roll to roll" print and cut. No need to rewind media for post-print cutting
- Easy registration marks. Machine-specific or generic registration support
- Manual alignment cutter and optical eye cutter support

*not all features reside in all packages (visit website for detailed feature by package list)

CADLINK FAMILY OF SOFTWARE PRODUCTS

Discover the benefits of using a single source for all your design and production requirements



www.cadlink.com

Digital Factory is a registered trademark of CADlink Technology Corporation.

All other trademarks are a property of their respective owners.

SUPPORTED PRINTERS:

Visit cadlink.com/supportedoutputs/ for a list of all supported printers.

CONNECT WITH US:



COMPATIBLE WITH:

Windows 10

Windows 8



SYSTEM REQUIREMENTS:

	MINIMUM	RECOMMENDED
CPU	Dual Core (2.0 Ghz or higher)	Triple Core (2.0 Ghz or higher)
HDD	500 GB	750+ GB
RAM	2 GB	4GB