

ENGRAVELAB 11

Optimize engraving design and production workflow



EngraveLab optimizes laser and rotary engraving design and workflows to simplify production. By integrating design and output tools into a single platform, EngraveLab enhances the efficiency and profitability of printing and engraving businesses of all sizes.

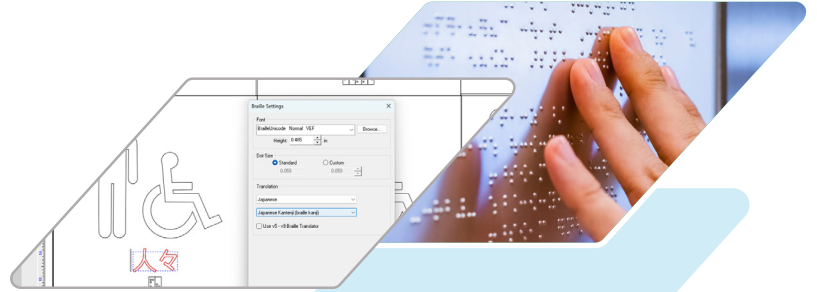




Industry Leading Features

Automated Text To Braille

Streamline your Braille translations with automation that converts all on-screen text to braille, eliminating repetitive text entries.



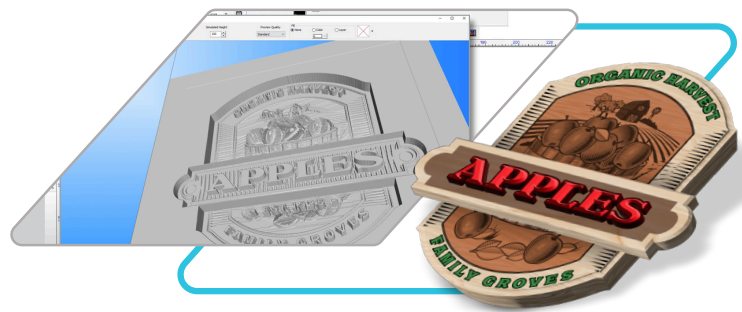
Badges and Serialization

Create multiple copies of the same job with text variations and/or serialization requirements. Support for variable data automates the design of name tags, door plates, badges, braille, and other items.



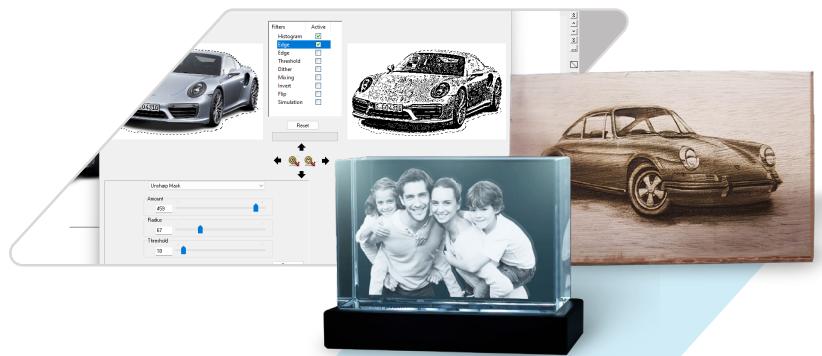
3D Design and Production

Import and preview 3D STL files in the interactive 3D preview window. Quickly and easily convert 2D artwork into 3D production using EngraveLab's simple grey scale conversion and 3D rendering tools.



Quality Photo Engraving

Convert photographs into stunning, finely detailed laser engravings on a variety of materials, including wood, leather, plastics, ceramics, metals, and more without the need for other design applications.



Advanced shape nesting

Maximize material savings by ganging up jobs produced on the same material. EngraveLab's "True shape" nesting algorithm efficiently groups engraved or cut jobs by their exact shape and dimensions.





New Features

Vectorization Previewer

The vectorization previewer in EngraveLab combines powerful tools with real-time previews, allowing you to dial in the perfect settings and apply it once. No need to reset and redo your settings.



Fit To Shape

Automatically adjust text to fit any vector shape. Select your standard or custom shape, text, and let the fit to shape tool in EngraveLab do the rest. It also works well with node editing tools for a pixel perfect design.



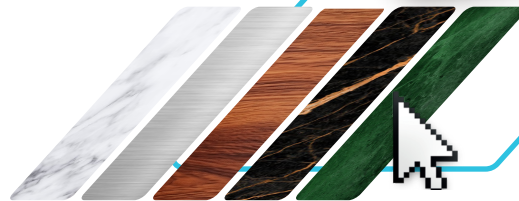
Effects Catalog

Save your most frequently used effects, effect combinations, and settings for easy reuse on new objects. Perfect an effect once and apply it to new projects with a single click, all stored in your own catalog.



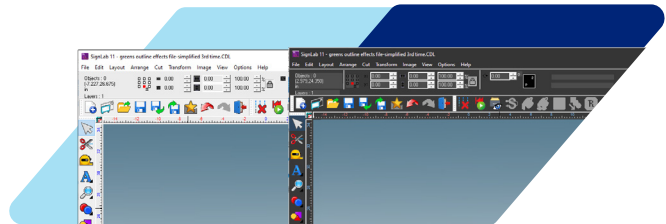
Saved Material Library

Store your settings for each material or substrate to your own personal catalog. The material library can be stored alongside a job file, giving you access to your settings no matter where you process the file.

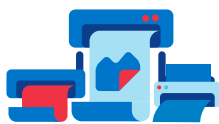


Theme Selector

Choose between light and dark user interface (UI) modes with the EngraveLab theme switcher feature, designed to match your preferred workflow configuration.



Benefits of using EngraveLab



The Widest Range of Supported Devices

Thousands of cutting and engraving devices supported with custom software drivers.



Graphic Production Specific Tools

Tools and settings created specifically for driving output devices.



Single Software Platform

Design and produce items without extra software – one program does it all!



Design Application Support

Easily import files from popular applications like Corel Draw™ and Adobe Illustrator™.



EngraveLab is available in four packages.

[Learn More](#)

For a complete list of features by package please visit: cadlink.com/engravelab-feature-comparison/



EngraveLab Pro

Run your entire engraving shop from one solution with complete design and production tools for laser as well as spindle-based engravers.



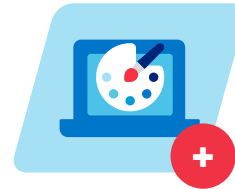
EngraveLab Expert

Complete rotary engraving solution. Includes all of the features required for complete text composition, design, layout, and production with braille support.



EngraveLab Laser

A stand-alone, easy to use solution for producing trophies and awards, signage, parts marking, and 3D engraving.



EngraveLab DesignPro

An ideal, inexpensive solution for shops that require additional design and pre-production workstations in order to prepare files for output.

Discover the benefits of using a single source for all your design and production requirements



Supported Devices:

Visit cadlink.com/supportedoutputs/ for a list of all supported engravers.

Compatible with:

Windows 11

Windows 10

32/64 bit

System Requirements:

	MINIMUM	RECOMMENDED
CPU	Dual Core (2.0 Ghz or higher)	Triple Core (2.0 Ghz or higher)
HDD	500 GB	750+ GB
RAM	2 GB	4GB



Try for Free



For more information, please visit www.fiery.com

Nothing herein should be construed as a warranty in addition to the express warranty statement provided with Fiery, LLC products and services.

ColorGuard, ColorRight, Command WorkStation, ColorWise, Fiery, the Fiery Logo, Fiery Compose, Fiery Driven, the Fiery Driven logo, Fiery Edge, Fiery Essential, Fiery HyperRIP, Fiery Impose, Fiery Impress, Fiery ImageViewer, Fiery Intensify, Fiery JobExpert, Fiery JobFlow, Fiery JobMaster, Fiery Prep-it, Fiery Prints, the Fiery Prints logo, Fiery TrueBrand, FreeForm, MicroPress, IQ, PrintMe, RIPChips, RIP-While-Print, Spot-On, Spot Pro, and WebTools are trademarks or registered trademarks of Fiery, LLC and/or its wholly owned subsidiaries in the U.S. and/or certain other countries. All other terms and product names may be trademarks or registered trademarks of their respective owners and are hereby acknowledged.

© 2024 FIERY, LLC. ALL RIGHTS RESERVED.

2024_08_28