



Digital Factory V11.2 Highlights

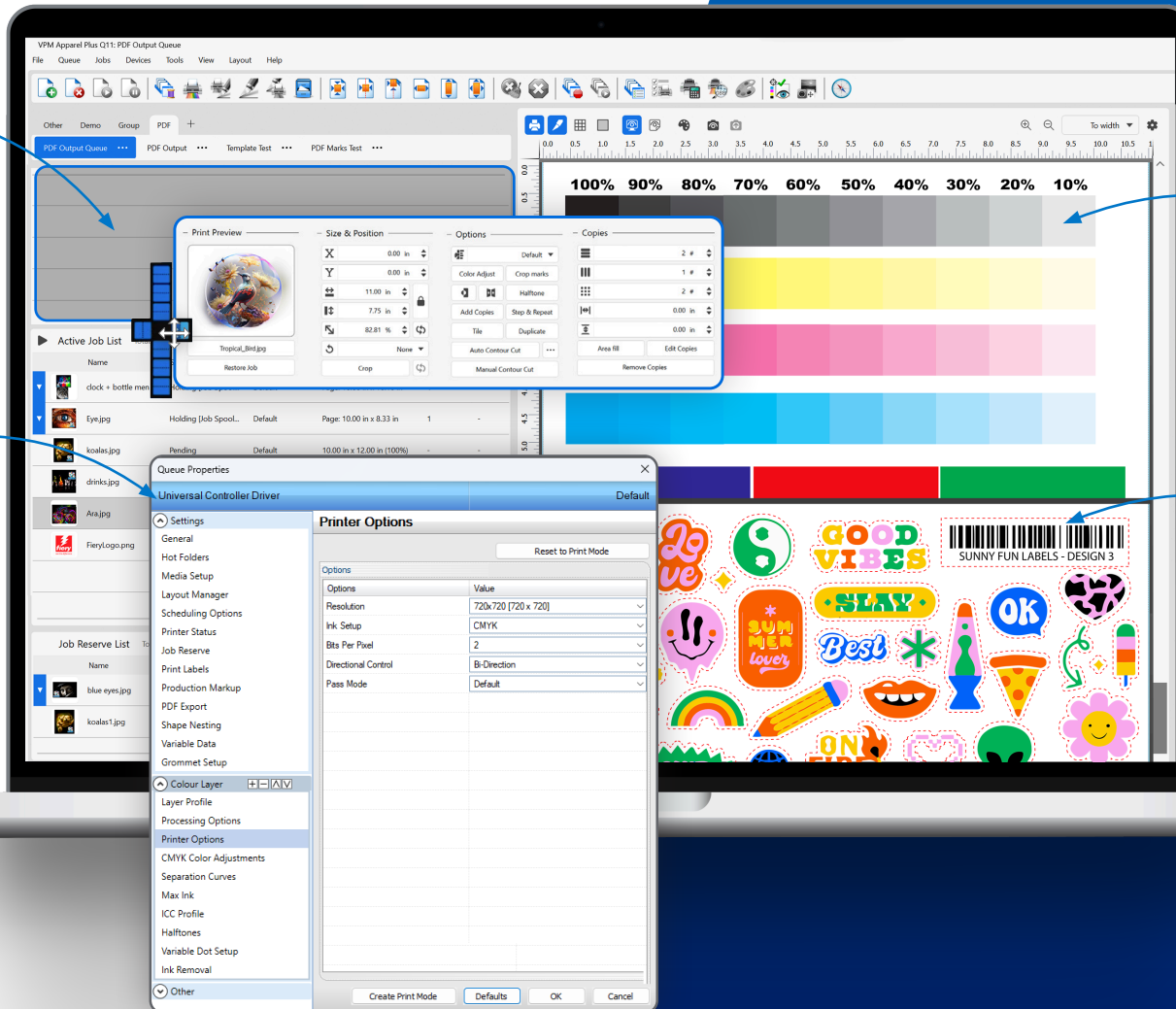
This new update expands the market leading performance of Digital Factory v11 with powerful new settings for color experts. Get the very best colors from your device with Digital Factory v11.2!

Pane Layout

Drag, drop, resize, move, add or remove, edit, and import/export the location of all workspaces in the Digital Factory UI. Includes preconfigured "workspaces" with preset layouts.

Universal Controller Driver

The UCD functions as an "unlocked" driver with several preconfigured print modes, controls, and settings moved to the user, allowing for a custom setup.



PMC Swatch Chart

New UI options and CMYK ink limit charts create test swatches to analyze and apply different ink settings per CMYK ink channel.

Print-labels Within Weed Borders

Adds ability to include print labels within a weed border, keeping important job information alongside your cut graphic.



Get More From Digital Factory

Learn More



PMC Expected Gamut Size

Provides a visual indicator on the quality of the gamut size while profiling a device (based on driver).



Optimized Support For Epson HTM devices

Reworked process for profiling Epson Halftone Module (HTM) devices.



Export All Jobs

Allows for jobs to be selected in batches and exported in bulk.



Input Space Color Replacement

Make color replacements based on the Input Color Space of the source image before editing the output color space.



iStudio & Nix Light Ink Support

Adds support for the iStudio and Nix Spectrophotometers for light ink color models in PMC.



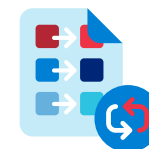
Import Spot Color Lookup Tables

Eliminates the need to enter spot color names one at a time in order to set up.



Costing Log Changes

Reworking and reusing the same file for a job no longer overwrites job costing data; each value is preserved in the cost log.



Manage Color Replacements

Save and export color replacement values, backup color replacement values, and easily save and share replacement values between devices.



For more information, please visit www.fiery.com

Nothing herein should be construed as a warranty in addition to the express warranty statement provided with Fiery, LLC products and services.

ColorGuard, ColorRight, Command WorkStation, ColorWise, Fiery, the Fiery logo, Fiery Compose, Fiery Driven, the Fiery Driven logo, Fiery Edge, Fiery Essential, Fiery HyperRIP, Fiery Impose, Fiery Impress, Fiery ImageViewer, Fiery Intensify, Fiery JobExpert, Fiery JobFlow, Fiery JobMaster, Fiery Prep-it, Fiery Prints, the Fiery Prints logo, Fiery TrueBrand, FreeForm, MicroPress, IQ, PrintMe, RIPChips, RIP-While-Print, Spot-On, SpotPro, and WebTools are trademarks or registered trademarks of Fiery, LLC and/or its wholly owned subsidiaries in the U.S. and/or certain other countries. All other terms and product names may be trademarks or registered trademarks of their respective owners and are hereby acknowledged.

© 2024 FIERY, LLC. ALL RIGHTS RESERVED.

2024_07_22